

# MLBX WIRELESS LASER MOBILE MINI MOUSE USER MANUAL

MODEL 177078



  
**MANHATTAN™**

MAN-177078-UM-1208-01

Thank you for purchasing the MANHATTAN® MLBX Wireless Laser Mobile Mini Mouse, Model 177078.

The easy-to-follow instructions in this user manual help make installation of the mouse quick and simple, so you'll also soon be enjoying the benefits of these features:

- Precision laser performance that easily connects and operates without a receiver
- Bluetooth technology that offers wireless freedom with effective range up to 10 m (33 ft.)
- Auto power management and retractable cable that help maintain proper battery levels — recharges while in use for uninterrupted operation
- Top-mount, push-button control that instantly shifts resolution from 800 to 1600 dpi
- Compact size, ambidextrous shape and no-slip texture for a secure grip
- Low-friction base that smoothly glides over work surfaces
- Plug and Play installation and Windows compatibility
- Lifetime Warranty

### **FCC Statement**

This equipment has been tested and found to comply with the limits for a class B digital device, pursuant to part 15 of the FCC rules. These limits are designed to provide reasonable protection against harmful interference in a residential installation. This equipment generates, uses

and can radiate radio frequency energy and, if not installed and used in accordance with the instructions, may cause harmful interference to radio communications. However, there is no guarantee that interference will not occur in a particular installation. If this equipment does cause harmful interference to radio or television reception — which can be determined by turning the equipment off and then back on — the user is encouraged to try to correct the interference by one or more of the following measures:

- Reorient or relocate the receiving antenna.
- Increase the separation between the equipment and receiver.
- Connect the equipment into an outlet on a circuit other than that to which the receiver is connected.
- Ask your MANHATTAN dealer or an experienced radio/TV technician for help.

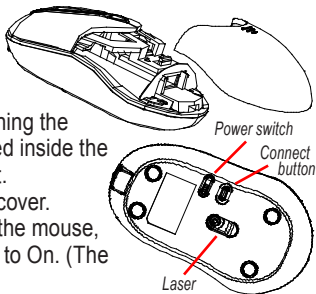
### **Operating Tips**

- To save battery power, operate the mouse on a bright surface with a fine texture. A very dark surface will result in higher power consumption.
- Avoid using the mouse on glass, mirrored or glossy surfaces, as it may work improperly or not at all.
- To ensure optimal transmission distance, don't use the mouse on a metal surfaces (as elements such as iron and aluminum can interfere with its performance).

# HARDWARE INSTALLATION

## Batteries

1. Slide the battery cover off the mouse.
2. Insert the 2 included AAA batteries, matching the +/- polarity as marked inside the battery compartment.
3. Replace the battery cover.
4. On the underside of the mouse, set the Power switch to On. (The LED will light.)



## Connecting to a Dongle/Drive

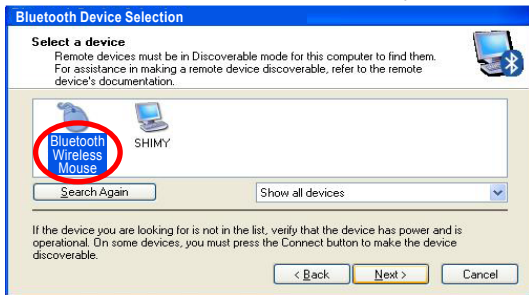
Before installing the MLBX Wireless Laser Mobile Mini Mouse, make sure that the Bluetooth protocol is available on your computer — either on the hard drive or through a Bluetooth dongle inserted in a USB port — as indicated by the Bluetooth icon (right), which typically appears in the lower-right section of your desktop system tray.



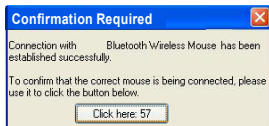
Different software is available to enable installation, such as Widcomm or IVT (whose screen images are presented in the procedures below as examples); otherwise, the built-in Microsoft software can be used (the second connection procedure of the three listed below).

## Connecting with Widcomm (recommended):

1. Double-click the Bluetooth icon and click “Next” on the Setup screens until the system finds the mouse and the Bluetooth Device Selection screen displays (below).

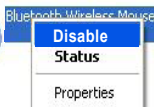


2. Select “Bluetooth Wireless Mouse” and click “Next.”
3. When the Confirmation Required prompt displays, click “Click here.” The mouse is now operational and ready for use.

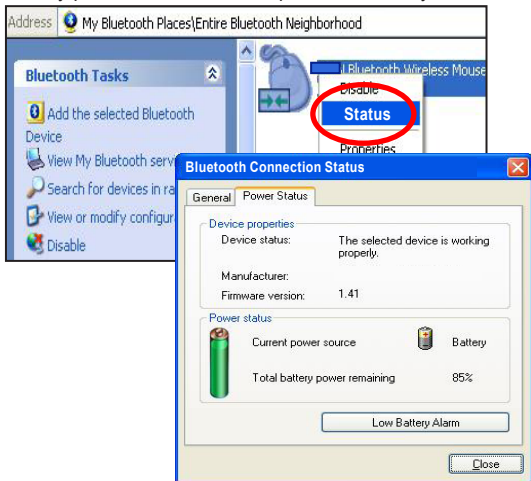


If unused for 10 minutes, the mouse transfers to the Power Save mode. Double-click the left button to reactivate the mouse. Once connected, double-clicking the left button will reactivate the mouse on subsequent power-ups without the need to reconnect.

If a disconnection occurs during the procedure, just reconnect the mouse. It may be necessary to open the Bluetooth Dongle Software window, disable the mouse, then reconnect.

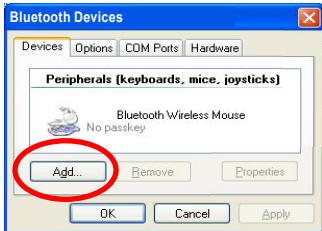


If you're using the Widcomm Bluetooth software, click the right mouse button and select "Status" (below) to check the battery power status and set up the low battery alarm.



## Connecting with Built-in Microsoft Software:

1. Double-click the Bluetooth icon to display the Bluetooth Devices screen; then click “Add” to display the Add Bluetooth Device Wizard welcome screen.



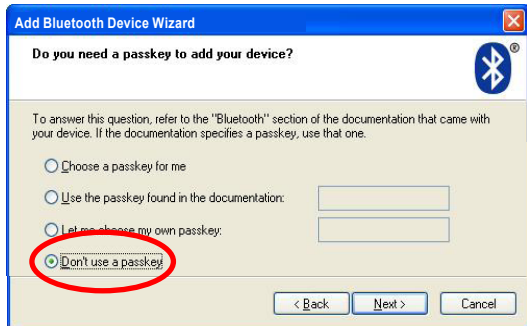
2. Select “My device is set up and ready to be found” (or “facility is ready for searching,” depending on the OS).



3. Select “Bluetooth Wireless Mouse” and click “Next.”

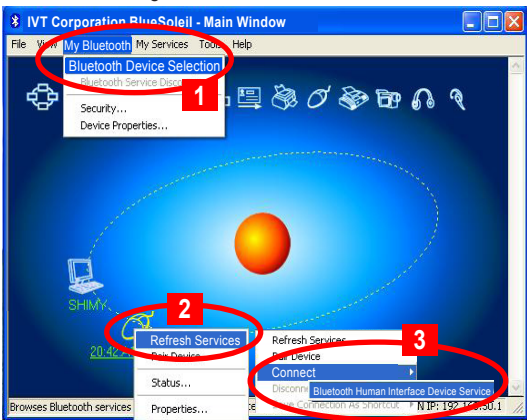


4. Select “Don't use a passkey” (or “No Password”) and click “Next,” then “Finish” to complete the procedure.



## Connecting with IVT:

1. Double-click the Bluetooth icon to open the management window; from the My Bluetooth menu, select “Bluetooth Device Discover” (or “Search for Bluetooth facilities”), or click the orange ball on the screen.



2. When the mouse icon appears on the screen, highlight it and right-click, then select “Refresh Services.”
3. Highlight the mouse icon again, right-click and select “Connect” then “Bluetooth Input Service” (or “Bluetooth Human Interface Device Service”) to complete the install.

## FAQ

If you're unable to connect the MLBX Wireless Laser Mobile Mini Mouse to the computer, or if the mouse works erratically, check the possible corrective measures below.

- Before installing the mouse, make sure the Bluetooth dongle has been installed and activated.
- Press and release the Connect button on the underside of the mouse and confirm that the red LED lights.
- Make sure the mouse is within the effective operating range of 10 M (approx. 33 feet).
- Make sure no change has been made to the Bluetooth installation since the mouse installation. If so, re-install the mouse.
- If your Bluetooth is connected to other Bluetooth devices, confirm that the Bluetooth speed is adequate.
- Check the batteries.

## SPECIFICATIONS

### Standards and Certifications

- USB 1.1 (recharge only), FCC, CE

### General

- 2.4 – 2.48 GHz Bluetooth Class II; effective range up to 10 m (33 ft.)

- Mouse: laser, 800/1200/1600 dpi resolution
- Controls: right, left and center mouse buttons with scroll wheel; power switch (on/off); top-mount resolution adjustment button
- Automatic power save/power off mode
- Material: ABS plastic
- Compatible with Windows 2000/XP/2003/Vista (Bluetooth enabled)

### **Dimensions**

- PCI 32-bit interface
- VIA 16212 chipset
- 2.5 V power supply with 5 V tolerant input

### **Environmental**

- Operational temperature: 0 – 45°C
- Storage temperature: -10 – 85°C
- Working humidity: < 85%

### **Package Contents**

- MLBX Wireless Laser Mobile Mini Mouse
- (2) AAA batteries and retractable cable reel
- User manual and carrying bag



# MANHATTAN™

BRINGING COMPUTERS TO LIFE

MANHATTAN® offers a complete line  
of PC Components, Peripherals, Cables and Accessories.

Ask your local computer dealer for more information  
or visit us online at

**[www.manhattan-products.com](http://www.manhattan-products.com)**

Copyright © MANHATTAN

All products mentioned are trademarks  
or registered trademarks of their respective owners.