

GIGABIT
SATA
NAS 2TB
QUICK
INSTALL
GUIDE
MODEL 524469



Thank you for purchasing the INTELLINET NETWORK SOLUTIONS™ Gigabit SATA NAS 2TB, Model 524469.

This quick install guide presents the rudimentary steps required to set up and operate this network-attached storage (NAS) device. For more detailed instructions and device specifications, refer to the user manual 1) on the CD enclosed with this product; 2) on the Web site listed below; or 3) in some cases, printed and enclosed with this product. Contact your INTELLINET NETWORK SOLUTIONS dealer with comments or questions, or visit **www.intellinet-network.com** for information on the latest software and firmware updates, related products and additional contact information.

In order to facilitate the use of the NAS, the device comes with default settings that most users can use without any modification. If a network manager needs to modify any of the settings, the NAS provides an intuitive Web-based user interface. **NOTE:** Make sure that the TCP/IP protocol is installed on the networked computers that will be accessing the NAS.

NOTE: Some screen images have been modified to fit the format of this guide.

System Requirements

- For accessing files:
Network adapter installed and functioning properly
- For PC configuration:
Internet Explorer 5.5 and above or latest Opera browser with Java support
- For Mac configuration:
Internet Explorer 5.2 or latest Opera browser with Java support
- For Linux configuration:
Latest Opera browser with Java support

Package Contents

- Gigabit SATA NAS 2TB
- Power adapter
- Quick install guide
- CD with user manual

HARDWARE INSTALLATION

To install a hard disk/drive in the Gigabit SATA NAS 2TB, follow the steps below.

1. Shut down the NAS and unplug the power cord from the AC outlet.
2. Remove the screws that secure the hard disk/drive cover to the side of the NAS device and slide the cover off.



3. Slide the hard drive/disk inside the cover you just removed from the NAS device.



4. Connect the SATA cable and hard disk/drive power cord between the hard disk/drive and the NAS.



5. Re-position the HDD/cover assembly onto the NAS, being careful not to crush (and possibly damage or disconnect) the SATA cable and HDD power cord. The hard disk/drive installation is now complete. Turn on the NAS.



1. Using Ethernet cable, connect the LAN (Ethernet) port to a PC, server, switch, hub or other network device on the LAN.
2. Connect the included power adapter to a surge protector.
3. If/when desired, connect the device port (A or B) to an external USB hard drive.
4. Turn on the power to the NAS.

Reset Button

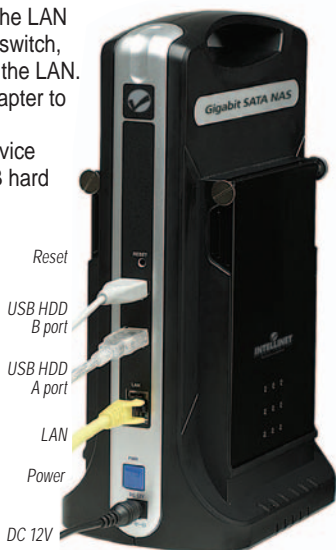
If you forget your password and/or unit IP address, you won't be able to access the NAS. However, you can use the recessed Reset button to restore factory settings. To initiate a reset, press and hold the button in (using a straight pin or similar object) for 5 seconds or more until the unit stops beeping.

Power Button

Press lightly once to turn the NAS on or off. The unit will write all data into the drive and safely power down. To force the unit to power down immediately, press and hold the button until the power is off.

Front Panel LEDs

LED	Status	Indication
Power (not shown at right)	On	Power to the NAS is on
	Off	Power to the NAS is off
HDD (A & B) / Data	Flashing	Attached HDD is reading/writing data
	On	Network link is 10/100 Mbps
	Off	Link is disconnected
LAN / 10/100	Flashing	Transmitting/receiving data packets
	On	Network link is 1000 Mbps
	Off	Link is disconnected
LAN / 1000	Flashing	Transmitting/receiving data packets



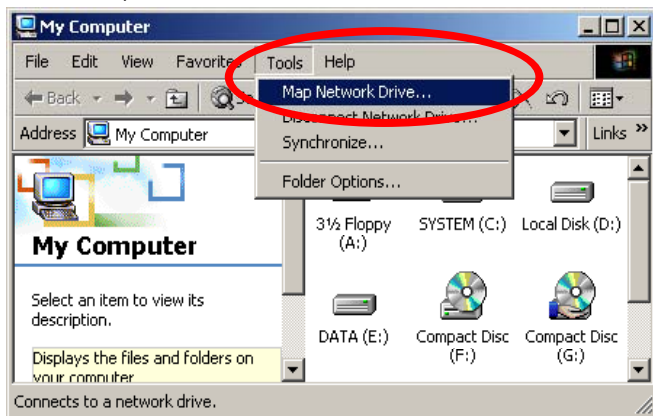
ACCESSING THE NAS

Mapping a Shared Folder

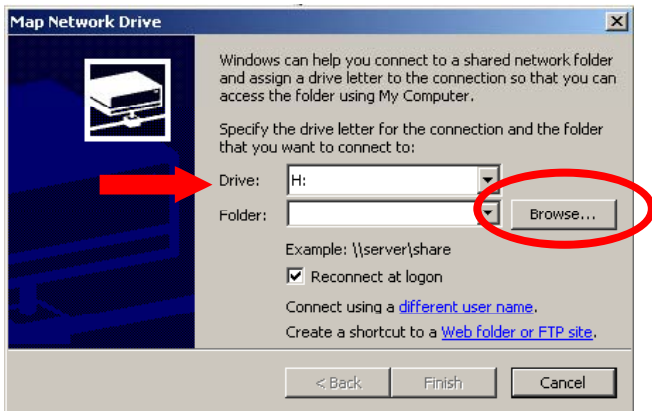
Mapping your shared folder(s) to your computer makes accessing them easier. When a shared folder is mapped, it will appear as a drive letter (for example, “D:” or “E:”) on your computer. When you want to access that shared folder, you can simply go to My Computer and double-click on the drive letter. You can also have the computer log in to the shared folder at startup so you don’t have to manually do it each time.

To map the NAS’s shared folder to a drive letter under My Computer:

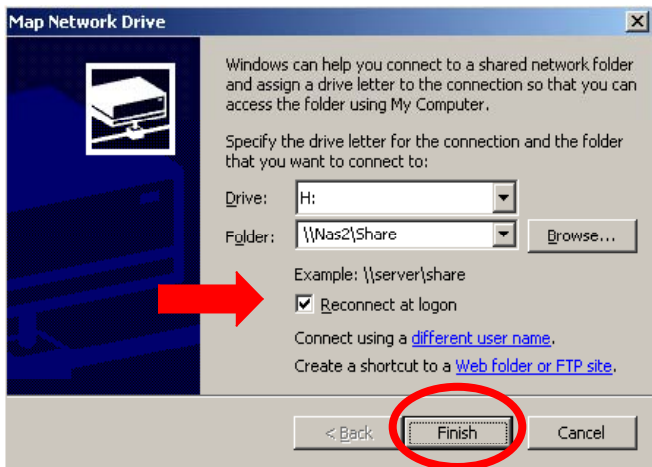
1. Select “Map Network Drive” from the Tools menu.



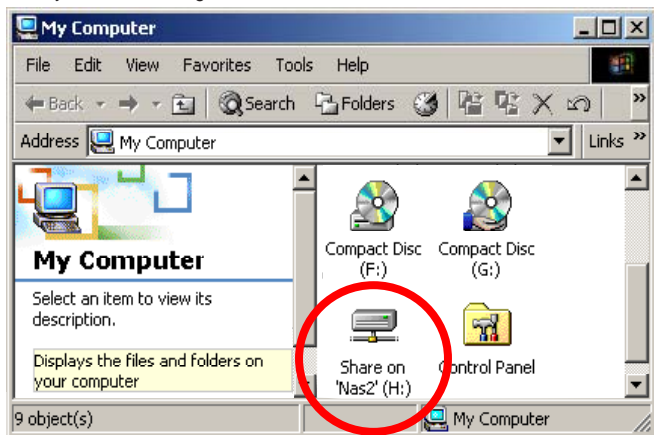
2. Choose a drive letter to use to map your shared folder. Click “Browse” and locate the shared folder in Entire Network. Click “OK” once you’ve located the shared folder.



3. Select "Reconnect at logon" so you don't have to repeat this process. Click "Finish."



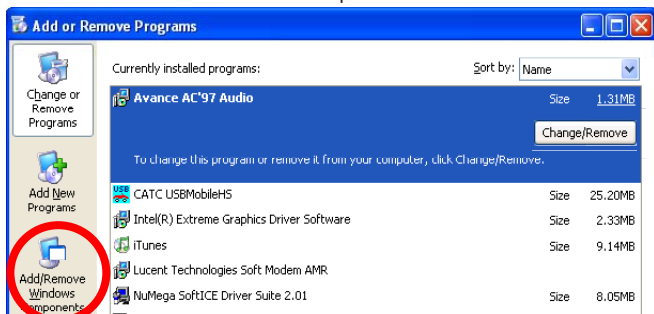
4. You will now see the Share as a drive in My Computer. You can access it by double-clicking on the drive.



Enabling UPnP

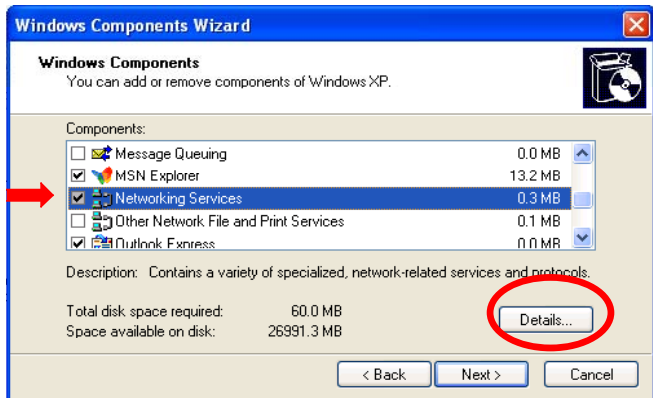
UPnP (Universal Plug and Play) is only available in Windows XP, Me and Vista. Though not required, enabling it makes configuration easier.

1. Go to the Start menu; then Control Panel; then Add/Remove Programs.
2. Click "Add/Remove Windows Components" on the left-hand side to

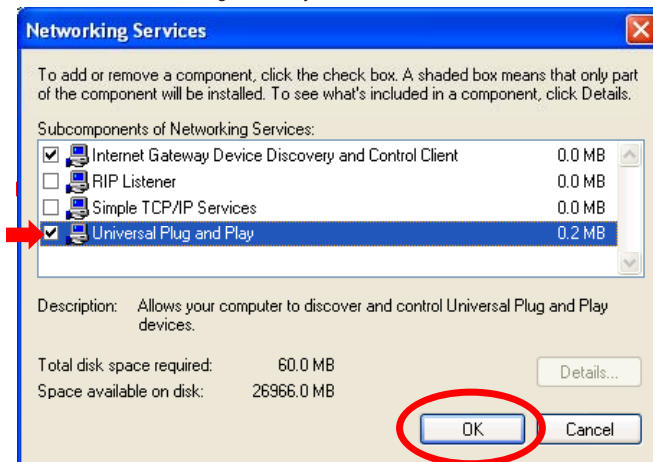


display the Windows Components Wizard screen.

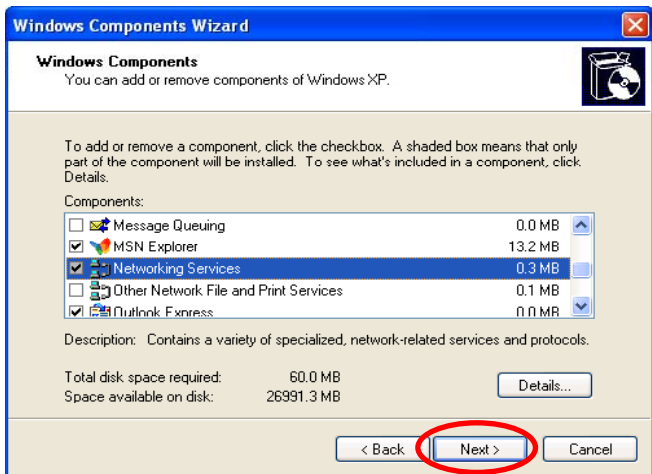
3. Highlight “Network Services” and click “Details.”



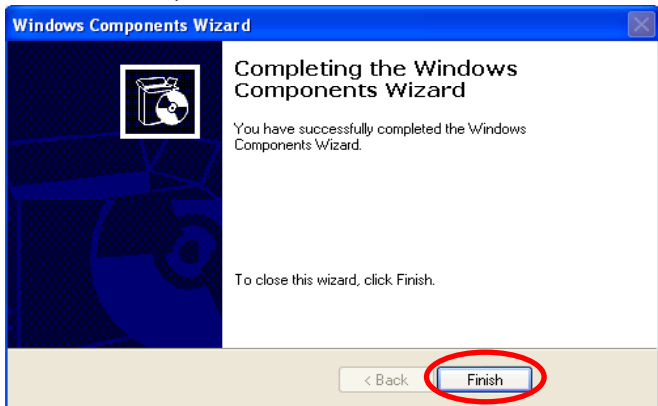
4. Select “Universal Plug and Play” and click “OK.”



5. Select “Next” to continue.

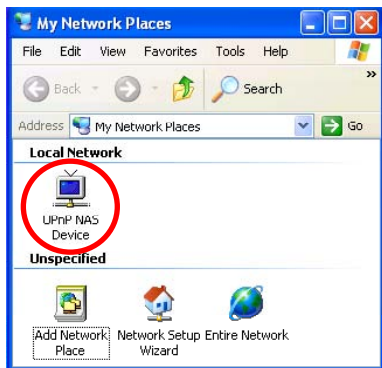


6. After all the components are installed, click “Finish.”



You can access the configuration user interface by double-clicking on My Network Places on your desktop. Double-click on the UPnP device to gain access to the configuration page.

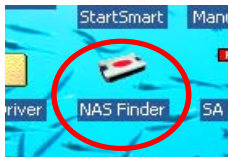
NOTE: You may need to restart your computer and/or refresh the view for the device to appear.



CONFIGURING THE NAS

There are several methods for accessing the NAS configuration interface.

- If you have UPnP enabled in your Windows Me/XP/Vista computer, you can access the configuration by double-clicking the UPnP device under My Network Places (as shown in the above image).
- You can also insert the installation CD into your Windows PC and run the NAS Finder utility. Your NAS unit should be listed with the unit's IP address. Double-click the device name or highlight the device name and click "Configure" to display the configuration page.



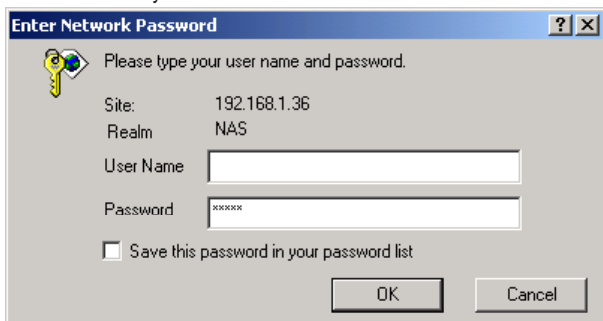
- If you know the name of the NAS device, you can type it directly into an Internet Explorer browser. **NOTE:** Some network configurations or versions of IE may not find the device correctly.



- Users who've changed the default settings to a fixed IP setting can directly access the configuration page by entering the NAS's fixed IP address in the browser. A window

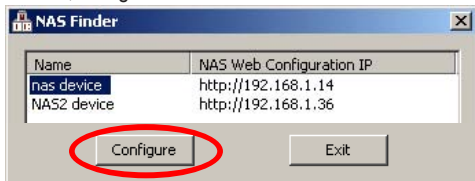


should appear asking for a username and password. Leave the User Name field blank and enter "admin" in the Password field. You'll then be taken to the System Information screen.



NAS Finder

Included on the CD is a utility for locating the NAS on the network, as mentioned above. This application runs on Windows Me, XP and Vista operating systems. You can run the application from the CD or copy it to the computer you want to use to configure the NAS. All NAS devices will be listed in the NAS Finder, along with the associated IP address of the unit. Double-click the device name or highlight the device name and click "Configure" to display the UI for the NAS device.





INTELLINET™

NETWORK SOLUTIONS

BRINGING NETWORKS TO LIFE

INTELLINET NETWORK SOLUTIONS™ offers a complete line of active and passive networking products.

Ask your local computer dealer for more information or visit

www.intellinet-network.com

Copyright © INTELLINET NETWORK SOLUTIONS

All products mentioned are trademarks or registered trademarks of their respective owners.