

SOHO NETWORK IP CAMERA QUICK START GUIDE

MODEL 503365



INTELLINET
NETWORK SOLUTIONS

INT-503365-QSG-0607-02

INTRODUCTION

Thank you for purchasing the INTELLINET NETWORK SOLUTIONS™ SOHO Network IP Camera, Model 503365.

This camera sends live video through a 10/100 Mbps wired network to a Web browser or camera viewer across the Internet anywhere in the world. A compact, self-contained unit, it lets you keep an eye on your home, your kids and your workplace — whatever is important to you. Plus, the included Camera Viewer utility lets you record the video to your local hard drive, “live” or on a predetermined schedule.

This Quick Start Guide presents the rudimentary steps required to set up and operate this device. Follow these simple procedures and you'll soon be enjoying these additional features:

- Digital 24-bit color motion-JPEG image
- Full-motion video up to 30 frames per second
- High-speed hardware-based image compression
- Easy-to-use Viewer & Recorder software
- Auto-setup for foolproof installation
- Integrated motion detection with FTP upload and email notification
- Lifetime Warranty

For more detailed instructions and specifications, refer to the user manual 1) on the CD enclosed with this product; 2) on the Web site listed below; or 3) in some cases, printed and enclosed with this product. Contact your INTELLINET NETWORK SOLUTIONS dealer with comments or questions, or visit **www.intellinet-network.com** for information on the latest software and firmware updates, related products and additional contact information.

Package Contents

- SOHO Network IP Camera
- Quick start guide, plus CD with software & user manual
- Camera mounting bracket & stand
- Power adapter
- Network cable (3 ft. / 900 mm)

Safety Precautions

- The unauthorized conversion and/or modification of the product is not allowed for safety and approval reasons (CE).
- This product is not a toy. Devices connected to the power supply should be kept out of reach of children. Be especially careful when children are around.
- Do not leave packaging material unattended. It can become a dangerous toy for children.
- The product is intended for use in dry, indoor locations and must not get damp or wet, as there is a risk of a fatal electric shock.
- Handle the product carefully and do not drop it. Knocks, blows or even a fall from a low height can damage it.
- Never use the product immediately after moving it from a cold room into a warm room, as condensation that forms could severely damage it. Instead, allow the camera to reach room temperature. This can take several hours.
- Do not attempt to open the camera's outer case. Any maintenance or repair work must be performed by authorized personnel only.

NOTE: The warranty becomes void if there is damage caused by ignoring these safety precautions or the following operating instructions. No liability is assumed for consequential damage, nor is any liability assumed for damage to property or personal injury caused by improper use or a failure to observe the safety instructions.

Disposal

Electric and electronic products do not belong in household waste. When the product is no longer usable, dispose of it in accordance with applicable statutory regulations.

INSTALLATION

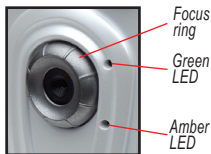
Hardware

Front:

Focus ring — Rotate to adjust the focus.

Monitoring LED (green) — Lights when someone is viewing the camera.

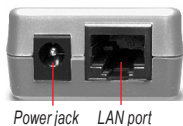
Ready LED (amber) — Lights when the camera is on and ready for use.



Bottom:

Power jack — Connect the power adapter here.

LAN port — Connect the network cable here.



Side:

Reset button — Press to reset the camera to factory default settings. Insert a paper clip into the hole, then press and hold it in for five seconds.

1. Using the included network cable, make your network connection from the camera's LAN port to your switch/router.
2. Connect the power adapter to the camera's power jack and plug it in to a power outlet. The camera is now powered on, and the amber Ready LED will light when the camera is operational.
3. Make sure that the correct VGA driver and DirectX 9.0 or above have been installed.

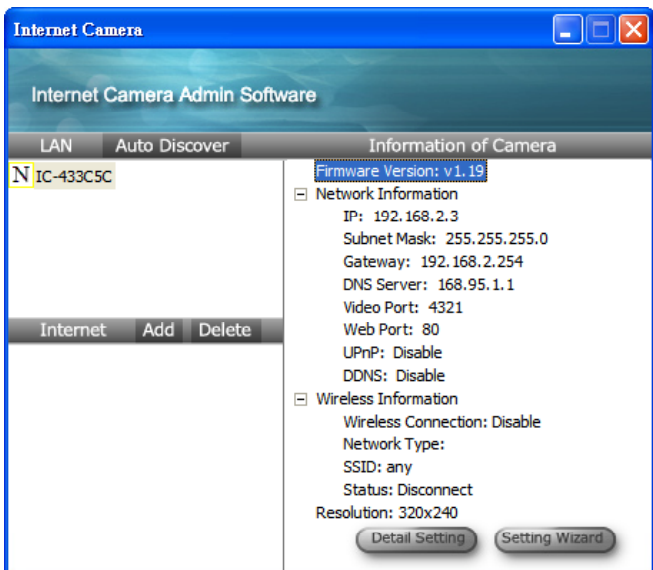
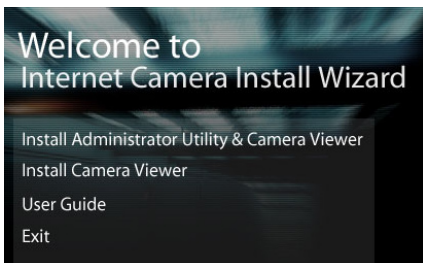
NOTE: Use only the power adapter shipped with the camera.

Software

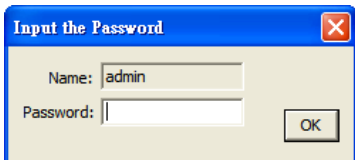
1. Run the Install Wizard by first inserting the enclosed CD in CD-ROM drive. The Autorun.exe program should execute automatically. If not, run Autorun.exe manually from the Autorun folder on the CD.
2. The Install Wizard will present four options. Click "Install Administrator Utility & Camera Viewer" and follow the subsequent on-screen instructions.

IP Address Setup: Using the Admin Software —

The administrator utility automatically runs after installation. On the first screen (Internet Camera), the cameras found in the network are listed in the left (LAN) window. To configure one, highlight it and click “Setting Wizard” to proceed.



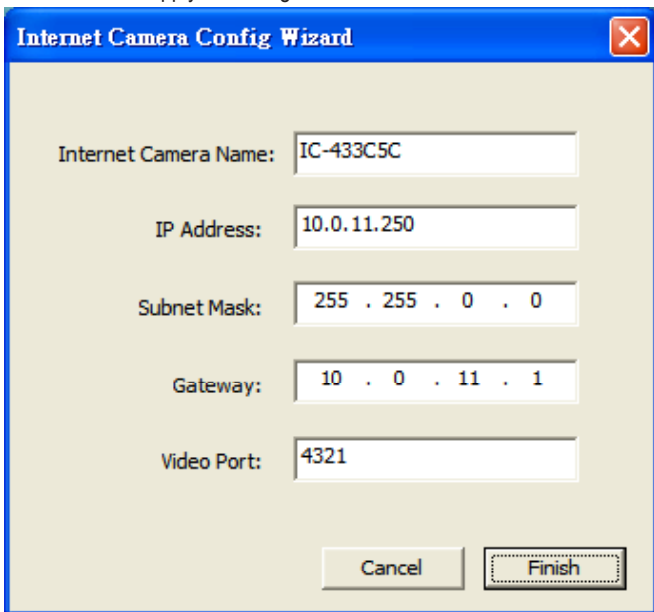
Enter the default password "1234" and click "OK" to log in to the IP setup page.



A dialog box titled "Input the Password" with a close button (X) in the top right corner. It contains two text input fields: "Name:" with the value "admin" and "Password:" which is empty. An "OK" button is located to the right of the password field.

The Internet Camera works through the network (TCP/IP protocol). The IP address and subnet mask setting must be correct in order to access the camera. The wizard will detect the IP address status of your network automatically and suggest a free IP address for the camera. You can accept the suggested value or enter the value manually. If you enter the value manually, the subnet mask must be the same for both the camera and the PC.

Click "Finish" to apply the configuration.



A dialog box titled "Internet Camera Config Wizard" with a close button (X) in the top right corner. It contains five text input fields with the following values: "Internet Camera Name:" (IC-433C5C), "IP Address:" (10.0.11.250), "Subnet Mask:" (255 . 255 . 0 . 0), "Gateway:" (10 . 0 . 11 . 1), and "Video Port:" (4321). At the bottom, there are two buttons: "Cancel" and "Finish". The "Finish" button is highlighted with a dashed border.

IP Address Setup: Using the Web Browser (Advanced) —

To configure the camera through your Web browser:

1. Verify the network connection (see Hardware), making sure the camera has an active link on the network switch it is connected to.
2. Set the computer IP address in range of 192.168.2.2 to 192.168.2.254.
3. Open your Web browser (MSIE 6.x or 7.x) and open <http://192.168.2.3>.
4. Log in (username = “admin”; password = “1234”).
5. When the Internet Explorer Security Warning displays, select “Install.”
6. Click “LAN” to open the network configuration page of the camera.

The screenshot shows the 'Internet Camera' web interface. At the top, there is a navigation bar with links for Camera, LAN, WLAN, E-Mail & FTP, Motion Detection, System, Status, Users, and Log. The 'LAN' section is active and contains the following configuration options:

- LAN** (Apply)
- Network Type: DHCP Static IP Address
- IP Address:
- Subnet Mask:
- Gateway:
- DNS Server:
- AV Control Port:
- Web Port:

The 'Dynamic DNS' section contains the following configuration options:

- Dynamic DNS** (Apply)
- Enable DDNS: Enable Disable
- Provider:
- Host Name:
- User Name:
- Password:

The 'UPnP' section contains the following configuration options:

- UPnP** (Apply)
- Enable UPnP: Enable Disable

7. Make the necessary changes so that the camera can be used in your existing network.
8. Change the IP setup of your computer back to its original settings.



INTELLINET™

NETWORK SOLUTIONS

BRINGING NETWORKS TO LIFE

INTELLINET NETWORK SOLUTIONS™ offers a complete line of active and passive networking products.

Ask your local computer dealer for more information or visit

www.intellinet-network.com

Copyright © INTELLINET NETWORK SOLUTIONS

All products mentioned are trademarks or registered trademarks of their respective owners.